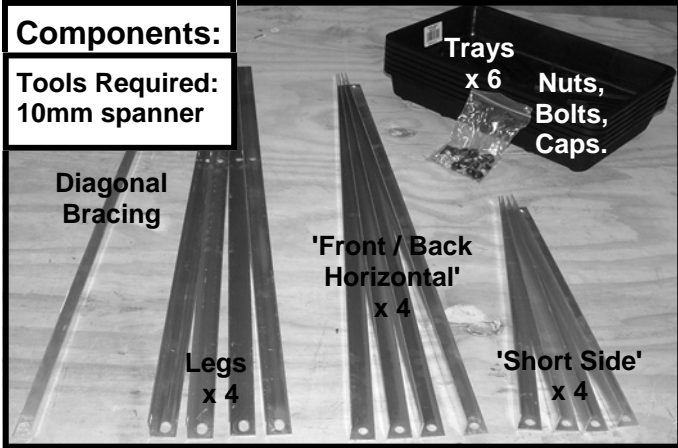


Budget Aluminium Seed Tray unit.

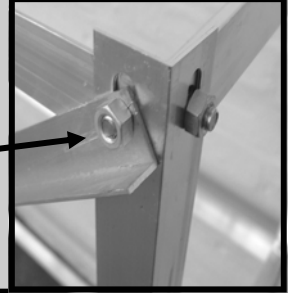
INSTRUCTIONS

Please read ALL before you begin.

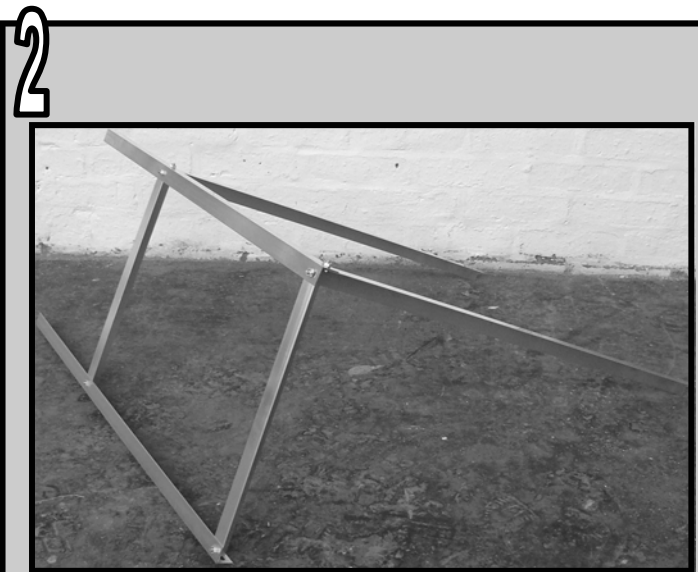
Note!



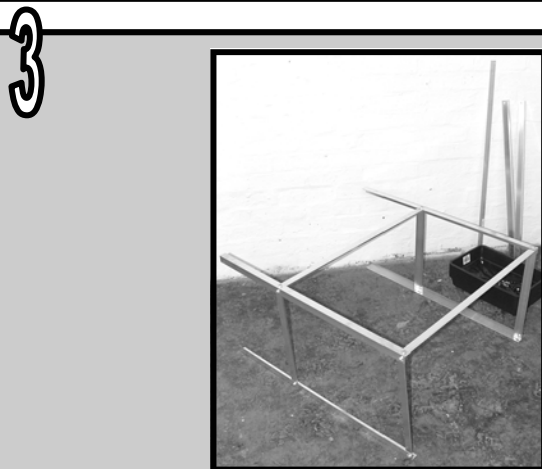
- Tip your nuts, bolts and caps into one of the seed trays.
- Throughout initial assembly the nuts and bolts need only be **finger tight**. The structure will be squared out on a level floor later on.
- In this model the nuts need to face **away** from the frame.



- Layout the four **legs** (Longer than Front / Back Horizontals).
- Join each pair together with the **'short side'** sections.



- Place one of the sides on the floor and attach the **'Front / Back Horizontals'** sections.

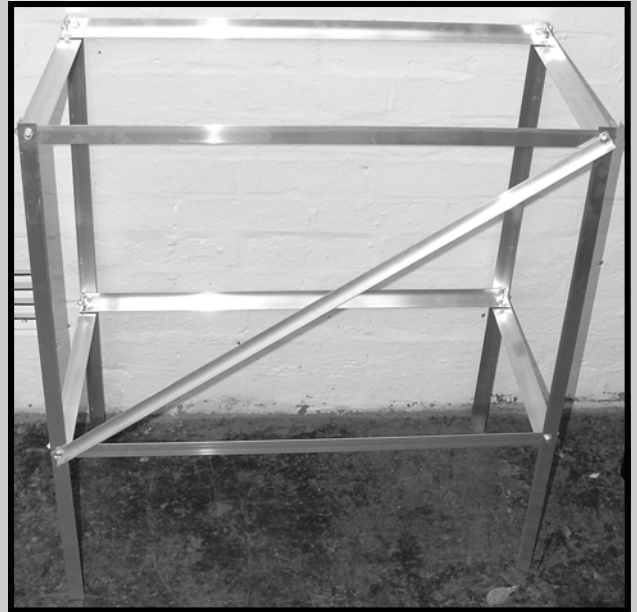
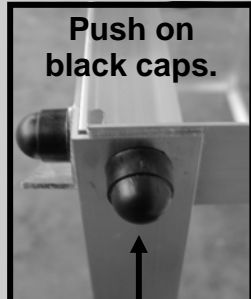
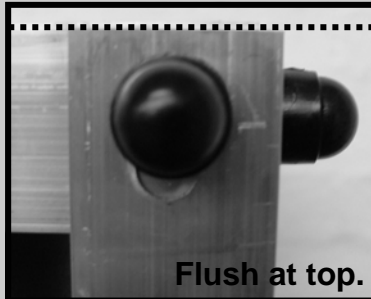
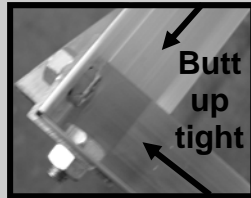


- Attach the other **side frame** in a similar manner.



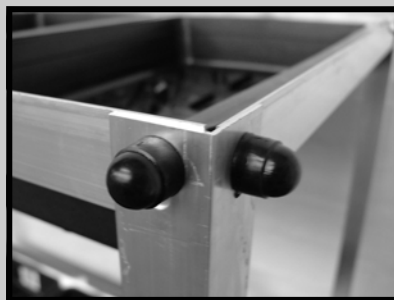
- The structure should now be lifted onto its legs. It will be unstable at this stage due to the un-tightened nuts and bolts so it is a good idea to lean it up against a **wall**.

5



- Attach the three remaining horizontal sections along with the '**diagonal bracing**'.
- Stand the frame on a level floor so the frame will be square when the nuts are tightened.
- **Tighten-up** each nut and bolt ensuring that both the long and short horizontals butt up against the leg. This creates a tight fit for each tray in the frame. Make the horizontals **flush** at the top for a **neat smooth** finish.
- Check that the frame is **square**, diagonal measurements should be **equal**. Adjust if necessary.
- Push the '**black caps**' onto each nut.

6



- **Move** the frame into situ.
- **Insert** trays.

If you would like a brochure containing our extensive product range then please contact us at,

'The Greenhouse People',
Unit 9B Blythe Park,
Cresswell Lane,
Cresswell,
Stoke—On—Trent.
Staffs.
ST11 9RD.

If you have any queries please do not hesitate to call us on **01782 388811**.
www.thegreenhousepeople.co.uk



The
Greenhouse
People