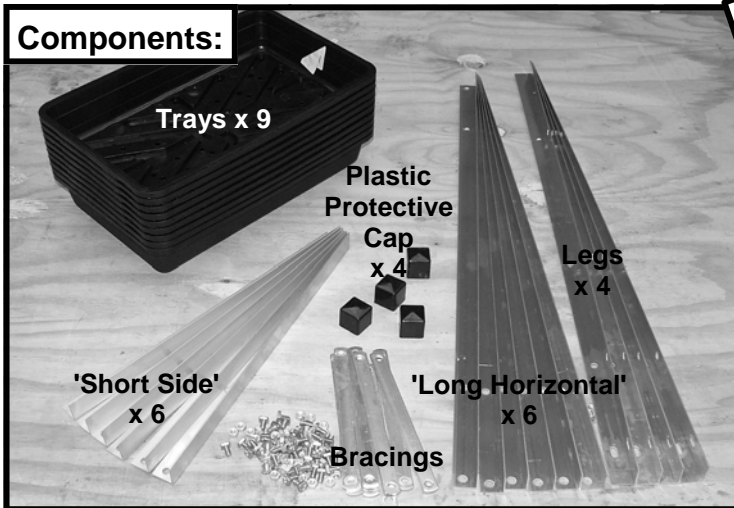


Junior Aluminium Seed Tray unit.

INSTRUCTIONS

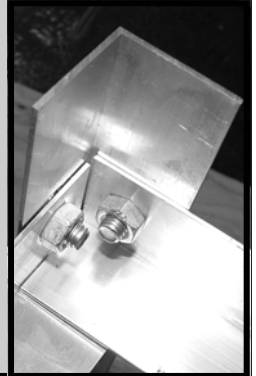
Please read ALL before you begin.

Components:

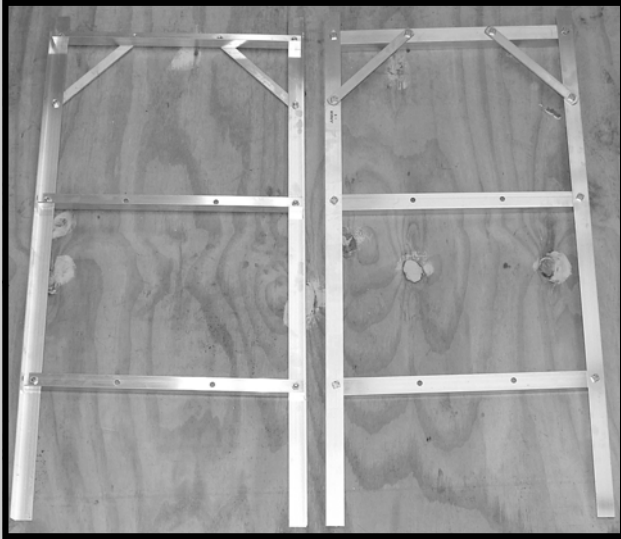


Note!

- Tip your nuts and bolts into one of the seed trays.
- Throughout initial assembly the nuts and bolts need only be **finger tight**. The structure will be squared out on a level floor later on.
- In this model the nuts can be used in either direction. Having the nuts on the outside is the quicker option, however, having the nuts on the inside gives a neater finish. →

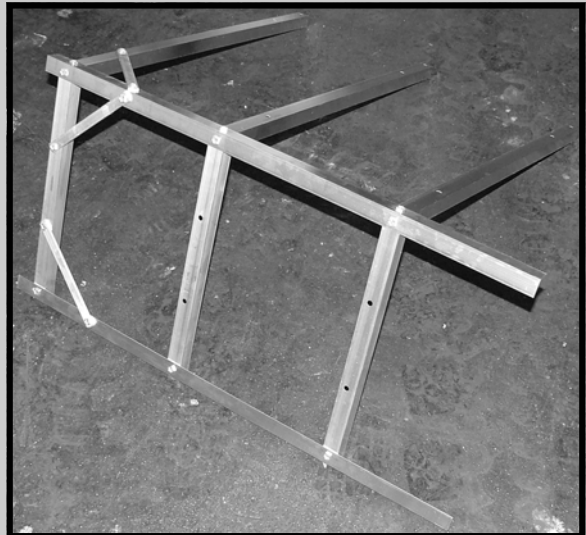


1



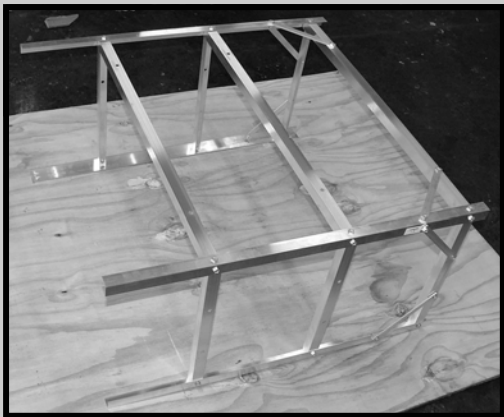
- Layout the four **legs**.
- Join each pair together with the '**short side**' sections.
- Add **bracings** for strength.

2



- Place one of the sides on the floor and attach the '**long horizontal**' sections.
- Add **bracing** to top horizontal.

3



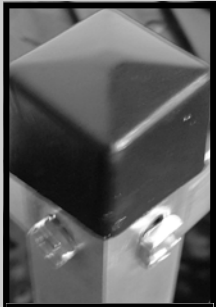
- Attach the other **side frame** in a similar manner.

4

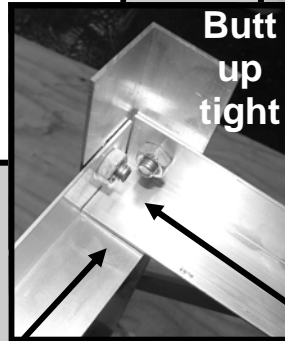
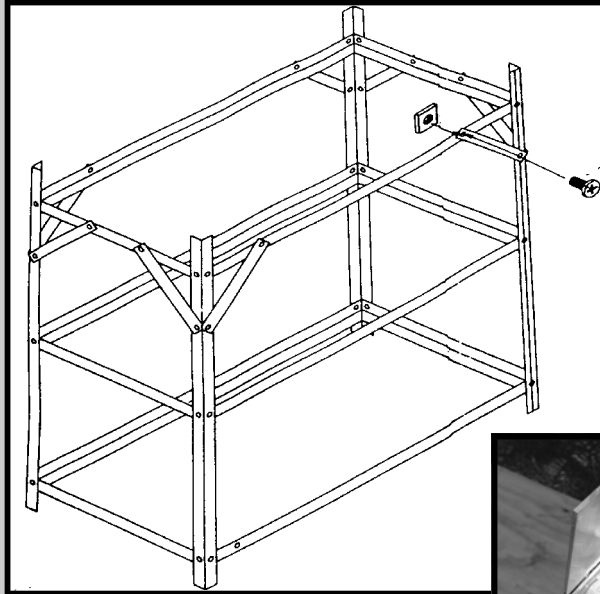
The structure should now be lifted onto its legs. It will be unstable at this stage due to the un-tightened nuts and bolts so it is a good idea to lean it up near a **wall**.



5



Push on protective leg caps.



- Attach the three remaining horizontal sections along with the bracings.
- Stand the frame on a level floor so the frame will be square when the nuts are tightened.
- **Tighten-up** each nut and bolt ensuring that both the long and short horizontals butt up against the leg. This creates a tight fit for each tray in the frame. Make the horizontals **flush** at the top for a **neat smooth** finish.
- Check that the frame is **square**, diagonal measurements should be **equal**. Adjust if necessary.
- Push the **Plastic Protective Cap** onto the top of each leg.

6



- **Move** the frame into situ.
- **Insert** trays.

If you would like a brochure containing our extensive product range then please contact us at,

'The Greenhouse People',
Unit 9B Blythe Park,
Cresswell Lane,
Cresswell,
Stoke—On—Trent.
Staffs.
ST11 9RD.

If you have any queries please do not hesitate to call us on **01782 388811**.
www.thegreenhousepeople.co.uk



The
Greenhouse
People